

CLEAN & SIMPLE

SPLIT Personality

A classic grey and white bathroom takes on two distinct looks thanks to artful accessorizing.

Text by **KENDRA JACKSON**

Photography by **ANGUS FERGUSSON**

Cool Contrast

The shower curtain's two-tone circle design sets the room's pace. A rag rug and faux bois gunmetal grey and white towels reinforce the understated scheme. A simple image of a hazy landscape offers a tranquil moment. **Design**, Vanessa Francis; **shower curtain**, Crate & Barrel; **rug**, bathmat, Ikea; **towels**, West Elm; **artwork** by Ryan Louis, Art Interiors.

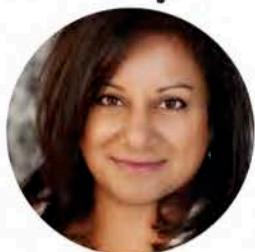


Bright flower-shaped knobs put a playful spin on the vanity



Colour Charged
A vibrant mix of turquoise and acid green in large-scale floral and trellis prints creates a summery look. Two oil paintings in watery hues are hung unframed for a casual studio feel, and a posy of fuchsia flowers is simply arranged as if plucked from the garden.
Shower curtain, trellis bathmat, Bed Bath & Beyond; **towels,** Ikea; **artwork** by Dana Cowie, Canvas Gallery.

The Design



WHO Vanessa Francis, Vanessa Francis Design, Toronto; blogger, decorhappy.blogspot.ca

APPROACH Design a bathroom with classic pieces and materials to keep decorating options open.

SELECT TILES White subway tiles are forever chic. They lighten up the shower end of the room, while hexagonal Cararra marble mosaics on the floor provide a strong grounding element.

DESIGN A VANITY Clean lines have longevity and versatility. The snow-white quartz Caesarstone counter lightens up the chunky piece.

COORDINATE HARDWARE Cool metal finishes suit any style. These factory-inspired sconces have a slightly industrial vibe. The polished chrome is repeated on the vintage-look faucet set and accessories.

Vanity construction, Concept Cabinets; **shower tile**, Tielemans Tile; **floor tile**, Peel Tile; **fixtures**, PMF Plumbing; **vanity hardware**, Ginger's; **sconces**, RH Restoration Hardware; **wall colour**, Stonington Grey (HC-169), Benjamin Moore.



Cool Contrast

Combine natural materials and a subtle two-tone scheme to create a handsome space.

TEXTURED STORAGE Baskets are great organizing tools. These chunky woven seagrass versions hold extra toilet paper and larger essentials that don't fit in the drawers.

SOLID-COLOUR TOWELS Towels are an easy way to change the energy in a bathroom. Dark grey and white ones look smart stacked on the vanity's open shelf and stand ready for guests.

RUSTIC WOOD MIRROR A reclaimed-wood mirror complements the baskets and brings contrast to the room's crisp white and polished metal elements.
Mirror, Boo Boo & Lefty; **baskets**, West Elm.



The Accessories



WHO Joel Bray, H&H Design Editor

APPROACH Amp up the bathroom's design elements with accessories to create two contrasting looks.

CHOOSE COLOURS Decorate with colours that show off your personality. In a small room like a bathroom, limit the palette to two main hues.

MIX TEXTURES Appeal to the senses of sight and touch by introducing embroidered, woven, fringed, reflective and high-gloss elements.

ADD FLOWERS Clip a few blooms and pop them into a simple vase to deliver a mood-lifting finishing touch.

HOUSE & HOME

Photography by Leah Kirin (Vanessa's portrait)/Angus Fergusson (Joel's portrait)

Colour Charged

Use charming patterns and bright colours to instill a lively energy against a neutral backdrop.

COLOURFUL TOTES Tucked under the vanity, a pair of canvas totes with wavy prints have a soft sculptural look and are a playful way to keep necessities out of sight.

BRIGHT & PATTERNED TOWELS Turquoise and embossed gold towels pop against the crisp white vanity and enhance the colour mix.

SOFT BLUE MIRROR Spray-painted Krylon's Blue Ocean Breeze, a pale cousin to the predominate turquoise, this mirror has presence without overwhelming. **Mirror** (painted), Ikea; **totes**, G.H. Johnson's; **blue canister**, Pottery Barn; **towels, knobs**, Anthropologie.

MIX & MATCH

Choose different but complementary containers instead of sets

LOBBY

Lisa Taylor Designs, available at Chair Source.
Choice of fabrics and finishes.



Also available in counter height.

8305 Jane St. Unit 4, Concord, ON
905.761.8790 1.888.275.5577 chairsources.ca

CHAIRSOURCE
residential • contract • commercial

CONTRIBUTORS



VALERIE WILCOX, photographer
"Easy DIY" page 52

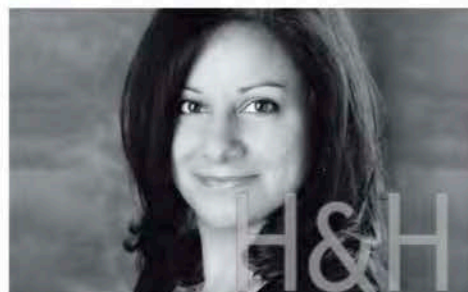
Kitchen sink: one bowl or two? A double, white farmhouse sink. **Would you rather reno your bathroom or kitchen?** I think the kitchen. I like to cook and bake so I spend a lot of time in there. We want to take down a wall to let in more light.

Eat-in kitchen or separate dining room? Eat-in kitchen with a table that doubles as an extra work surface. **Easy way to change the look of your bathroom?** Fresh new window coverings.



OLIVIA STREN, writer
"Nouvelle Cuisine" page 94

Best storage solution in a small bathroom? I love a straw basket. **Would you rather reno your bathroom or kitchen?** Both! **Eat-in kitchen or separate dining room?** Eat-in kitchen. It has to be sunny — the kind of room that inspires latte-drinking and makes you wish you were a morning person. **Easy way to change the look of your bathroom?** New towels. I'm in love with towels from the Danish company Tine K Home.



VANESSA FRANCIS, designer
"Split Personality" page 110

Kitchen sink: one bowl or two? I'm a two bowl girl. I like having the second sink with a dish rack for the dishes that are hand-washed. **Best storage solution in a small bathroom?** A vanity with all drawers rather than doors. If you have doors, install a pullout shelf, it makes accessing everything much easier. **Would you rather reno your bathroom or kitchen?** Can I say both? They don't need to be reno'd — just prettied up a bit!

Photography by Colin Sealy (top)/Claude Stren (centre)/Leah Kirin (bottom)